

23 Stitchbird Crescent Papakura

Talk about a Townhouse

Tidy townhouse only a couple of years old will soon be available for rent. 2 level home, the bottom level consists of kitchen, dining, living, study, separate toilet & single internal access garage. Upstairs you will find 4 bedrooms, master with ensuite plus family bathroom with bath. There is a small easy-care lawn area of the lounge which is fully fenced.

Features:

- * 4 Bedrooms plus study
- * 2 Bathrooms plus additional separate toilet
- * Single internal access garage
- * Alarm

4 2 0

FOR SALE
\$630 Weekly

VIEW
[ljhooker.co.nz/2Q4HQ8](https://www.ljhooker.co.nz/2Q4HQ8)

CONTACT
Casey Norris 021 820 484

LJ HOOKER TAKANINI
(09) 320 5131



[propertymanagement.ljhooker.co.nz](https://www.propertymanagement.ljhooker.co.nz)

Residential | Commercial | Rural | Land Sections | Coastal

- * Small easy-care section
- * Close to schools, shops and public transport

Prior to viewing this property you will need to apply, if you are shortlisted then we will be in contact with you to arrange a private viewing, unfortunately only applicants who have been shortlisted will be able to view.

****APPLY HERE**** http://www.tpsportal.co.nz/tenancy_application/tps3094

Move in costs

Rent: \$630

Bond: \$2520

TOTAL MOVE IN COSTS: \$3150

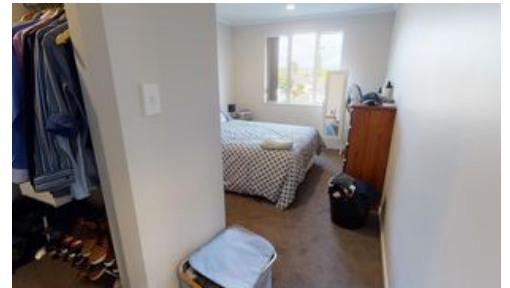
You can view from the roadside however do not enter the property without permission

LANDLORDS - are you looking for hassle free property management - then contact Casey on 021 820484 to discuss

More About this Property

PROPERTY ID	2Q4HQ8
PROPERTY TYPE	Rental
LEASE TYPE	Lease
PETS	No
DATE AVAILABLE	31/05/2020

Licensed Real Estate Agents (REAA2008)



LJ Hooker Takanini - Realty Executives Ltd

CONTACT: Casey Norris

EMAIL: cnorris@ljhtakanini.co.nz

MOBILE: 021 820 484

PHONE: (09) 320 5131

FAX: (09) 320 5135

DISCLAIMER

The above information has been furnished to us by the Vendor. We have not verified whether or not that information is accurate and do not have any belief one way or the other in its accuracy. We do not accept any responsibility to any person for its accuracy and do no more than pass it on. All interested parties should make and rely upon their own enquiries in order to determine whether or not this information is in fact accurate.



propertymanagement.ljhooker.co.nz

Residential | Commercial | Rural | Land Sections | Coastal